

# SUBMITTALS

## Side-Discharge Condensing Unit

Rev. May 2021



**UUC112WCDA**  
**UUC118WCDA**  
**UUC124WCDA**  
**UUC130WCDA**  
**UUC136WCDA**  
**UUC148WCDA**



**GE APPLIANCES**  
a Haier company

## Revision History

**Rev. July 2020** - Submittal edition release.

**Rev. March 2021** - Capacity table header title change.

**Rev. May 2021** - Cooling operating range updated.

# SIDE-DISCHARGE AIR CONDITIONER SUBMITTAL

## 12,000 BTU 14 SEER SIDE-DISCHARGE AIR CONDITIONER

### UUC112WCDA

Job Name: \_\_\_\_\_

Purchaser: \_\_\_\_\_

Submitted To: \_\_\_\_\_

Construction: \_\_\_\_\_

Reference: \_\_\_\_\_

Approval: \_\_\_\_\_

Date: \_\_\_\_\_

Submitted By: \_\_\_\_\_

Unit: \_\_\_\_\_

Drawing #: \_\_\_\_\_



#### Specifications

|                            |   |
|----------------------------|---|
| Compressor                 | Rotary  |
| Uncrated Dimension (HxWxD) | 21.9 x 33.5 x 13.6 in<br>(555 x 850 x 345 mm) |
| Crated (HxWxD)             | 24.5 x 36.0 x 15.0 in<br>(622 x 915 x 380 mm) |
| Outdoor Sound Rating dB    | 52  |
| Heat Exchanger Fin Type    | Aluminum                                      |
| Weight (Net/Gross)         | 76.1/92.6 lbs                                 |
| Factory Refrigerant Charge | R-410A (3.1 lbs)                              |

#### Electrical Requirement

|                         |                      |
|-------------------------|----------------------|
| Power Supply            | 115V, 1 Phase, 60 HZ |
| Operating Voltage Range | 103-127 VAC          |
| Max. Fuse/Breaker Size  | 15A                  |
| MCA                     | 11A                  |

#### Operating Range

|         |                    |
|---------|--------------------|
| Cooling | 50~115°F (10~46°C) |
|---------|--------------------|

#### Cooling Performance

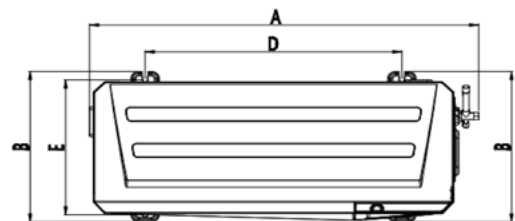
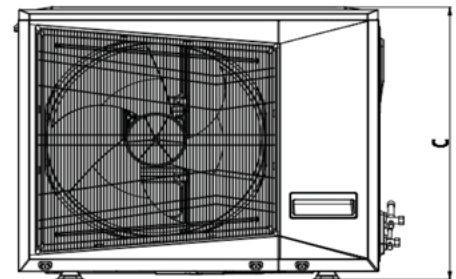
|                        |            |
|------------------------|------------|
| Rated Cooling Capacity | 12,000 BTU |
| SEER                   | 14         |
| EER                    | 12.0       |

#### Pipe Length

|                                |                                  |
|--------------------------------|----------------------------------|
| Minimum Pipe Length            | 10 ft                            |
| Maximum Pipe Length            | 82 ft                            |
| Maximum Pipe Height Difference | 33 ft                            |
| Braze Connection               | 1/4"(Discharge)<br>1/2"(Suction) |

#### Dimensions (In.)

| A    | B    | C    | D    | E    |
|------|------|------|------|------|
| 33.5 | 13.6 | 21.9 | 20.0 | 11.0 |



Notice: Federal law allows this unit to be installed only in AK, CO, CT, ID, IL, IA, IN, KS, MA, ME, MI, MN, MO, MT, ND, NE, NH, NJ, NY, OH, OR, PA, RI, SD, UT, VT, WA, WV, WI, WY, and U.S. territories.

# SIDE-DISCHARGE AIR CONDITIONER SUBMITTAL

12,000 BTU 14 SEER SIDE-DISCHARGE AIR CONDITIONER

**UUC112WCDA**

## COOLING CAPACITY DATA

| Outdoor<br>Air Temp<br>DB | Indoor Temperature        |                    |                           |                    |                           |                    |
|---------------------------|---------------------------|--------------------|---------------------------|--------------------|---------------------------|--------------------|
|                           | 70°F (21°C)               |                    | 75°F (24°C)               |                    | 80°F (27°C)               |                    |
|                           | Total Capacity<br>(Btu/h) | Power Usage<br>(w) | Total Capacity<br>(Btu/h) | Power Usage<br>(w) | Total Capacity<br>(Btu/h) | Power Usage<br>(w) |
| 65°F (18°C)               | 11950                     | 770                | 13000                     | 780                | 14060                     | 795                |
| 75°F (24°C)               | 11550                     | 805                | 12550                     | 815                | 13580                     | 830                |
| 85°F (29°C)               | 11100                     | 870                | 12050                     | 885                | 13000                     | 900                |
| 95°F (35°C)               | 10550                     | 965                | 11300                     | 980                | 12180                     | 995                |
| 105°F (41°C)              | 9950                      | 1065               | 10550                     | 1080               | 11290                     | 1097               |
| 115°F (46°C)              | 9300                      | 1170               | 9750                      | 1185               | 10300                     | 1203               |

# SIDE-DISCHARGE AIR CONDITIONER SUBMITTAL

## 18,000 BTU 14 SEER SIDE-DISCHARGE AIR CONDITIONER

### UUC118WCDA

Job Name: \_\_\_\_\_

Purchaser: \_\_\_\_\_

Submitted To: \_\_\_\_\_

Construction: \_\_\_\_\_

Reference: \_\_\_\_\_

Approval: \_\_\_\_\_

Date: \_\_\_\_\_

Submitted By: \_\_\_\_\_

Unit: \_\_\_\_\_

Drawing #: \_\_\_\_\_



### Specifications

|                            |   |
|----------------------------|---|
| Compressor                 | Rotary  |
| Uncrated Dimension (HxWxD) | 27.6 x 36.0 x 15.0 in<br>(702 x 914 x 382 mm) |
| Crated (HxWxD)             | 30.8 x 38.4 x 16.5 in<br>(782 x 975 x 420 mm) |
| Outdoor Sound Rating dB    | 55  |
| Heat Exchanger Fin Type    | Aluminum                                      |
| Weight (Net/Gross)         | 105.8/123.5 lbs                               |
| Factory Refrigerant Charge | R-410A (4.7 lbs)                              |

### Electrical Requirement

|                         |                             |
|-------------------------|-----------------------------|
| Power Supply            | 208-230V, 1 Phase,<br>60 HZ |
| Operating Voltage Range | 187-253 VAC                 |
| Max. Fuse/Breaker Size  | 15A                         |
| MCA                     | 10A                         |

### Operating Range

|         |                    |
|---------|--------------------|
| Cooling | 50-115°F (10-46°C) |
|---------|--------------------|

### Cooling Performance

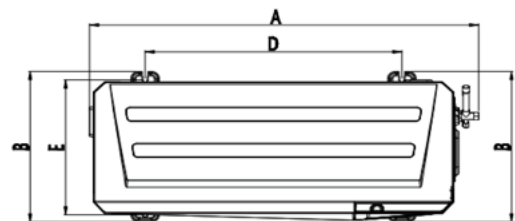
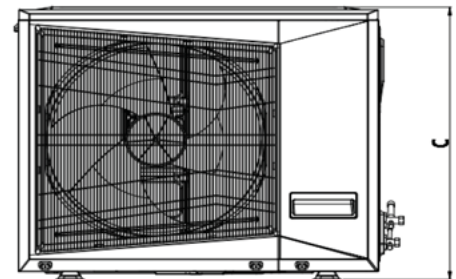
|                        |            |
|------------------------|------------|
| Rated Cooling Capacity | 17,500 BTU |
| SEER                   | 14.5       |
| EER                    | 12.0       |

### Pipe Length

|                                |                                  |
|--------------------------------|----------------------------------|
| Minimum Pipe Length            | 10 ft                            |
| Maximum Pipe Length            | 82 ft                            |
| Maximum Pipe Height Difference | 33 ft                            |
| Braze Connection               | 1/4"(Discharge)<br>1/2"(Suction) |

### Dimensions (In.)

| A    | B    | C    | D    | E    |
|------|------|------|------|------|
| 36.0 | 15.0 | 27.6 | 21.4 | 12.8 |



Notice: Federal law allows this unit to be installed only in AK, AL, AR, CO, CT, DC, DE, FL, GA, HI, ID, IL, IA, IN, KS, KY, LA, MA, ME, MD, MI, MN, MO, MS, MT, NC, ND, NE, NH, NJ, NY, OH, OK, OR, PA, RI, SC, SD, TN, TX, UT, VA, VT, WA, WV, WI, WY, AND U.S. territories

# SIDE-DISCHARGE AIR CONDITIONER SUBMITTAL

18,000 BTU 14 SEER SIDE-DISCHARGE AIR CONDITIONER

**UUC118WCDA**

## COOLING CAPACITY DATA

| Outdoor<br>Air Temp<br>DB | Indoor Temperature        |                    |                           |                    |                           |                    |
|---------------------------|---------------------------|--------------------|---------------------------|--------------------|---------------------------|--------------------|
|                           | 70°F (21°C)               |                    | 75°F (24°C)               |                    | 80°F (27°C)               |                    |
|                           | Total Capacity<br>(Btu/h) | Power Usage<br>(w) | Total Capacity<br>(Btu/h) | Power Usage<br>(w) | Total Capacity<br>(Btu/h) | Power Usage<br>(w) |
| 65°F (18°C)               | 17700                     | 1150               | 19450                     | 1170               | 21200                     | 1190               |
| 75°F (24°C)               | 17200                     | 1210               | 18700                     | 1230               | 20200                     | 1250               |
| 85°F (29°C)               | 16600                     | 1310               | 17900                     | 1330               | 19100                     | 1350               |
| 95°F (35°C)               | 15950                     | 1455               | 17150                     | 1475               | 18000                     | 1495               |
| 105°F (41°C)              | 15250                     | 1595               | 16000                     | 1615               | 16750                     | 1635               |
| 115°F (46°C)              | 14200                     | 1730               | 14700                     | 1755               | 15550                     | 1775               |

# SIDE-DISCHARGE AIR CONDITIONER SUBMITTAL

## 24,000 BTU 14 SEER SIDE-DISCHARGE AIR CONDITIONER

### UUC124WCDA

Job Name: \_\_\_\_\_

Purchaser: \_\_\_\_\_

Submitted To: \_\_\_\_\_

Construction: \_\_\_\_\_

Reference: \_\_\_\_\_

Approval: \_\_\_\_\_

Date: \_\_\_\_\_

Submitted By: \_\_\_\_\_

Unit: \_\_\_\_\_

Drawing #: \_\_\_\_\_



#### Specifications

|                            |  |
|----------------------------|--|
| Compressor                 | Rotary   |
| Uncrated Dimension (HxWxD) | 31.9 x 40.0 x 17.5 in<br>(810 x 1015 x 445 mm) |
| Crated (HxWxD)             | 38.4 x 42.3 x 19.5 in<br>(975 x 1075 x 495 mm) |
| Outdoor Sound Rating dB    | 59   |
| Heat Exchanger Fin Type    | Aluminum                                       |
| Weight (Net/Gross)         | 125.7/169.7 lbs                                |
| Factory Refrigerant Charge | R-410A (6.1 lbs)                               |

#### Electrical Requirement

|                         |                             |
|-------------------------|-----------------------------|
| Power Supply            | 208-230V, 1 Phase,<br>60 HZ |
| Operating Voltage Range | 187-253 VAC                 |
| Max. Fuse/Breaker Size  | 15A                         |
| MCA                     | 12A                         |

#### Operating Range

|         |                    |
|---------|--------------------|
| Cooling | 50-115°F (10-46°C) |
|---------|--------------------|

#### Cooling Performance

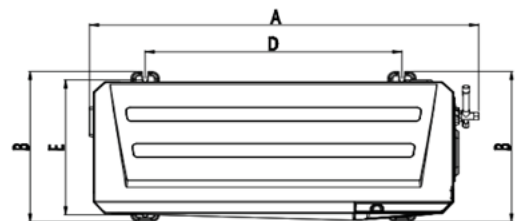
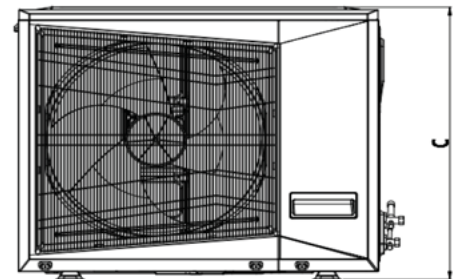
|                        |            |
|------------------------|------------|
| Rated Cooling Capacity | 23,400 BTU |
| SEER                   | 14.5       |
| EER                    | 12.0       |

#### Pipe Length

|                                |                                    |
|--------------------------------|------------------------------------|
| Minimum Pipe Length            | 10 ft                              |
| Maximum Pipe Length            | 82 ft                              |
| Maximum Pipe Height Difference | 33 ft                              |
| Braze Connection               | 3/8" (Discharge)<br>5/8" (Suction) |

#### Dimensions (In.)

| A    | B    | C    | D    | E    |
|------|------|------|------|------|
| 40.0 | 17.5 | 31.9 | 26.4 | 15.2 |



Notice: Federal law allows this unit to be installed only in AK, AL, AR, CO, CT, DC, DE, FL, GA, HI, ID, IL, IA, IN, KS, KY, LA, MA, ME, MD, MI, MN, MO, MS, MT, NC, ND, NE, NH, NJ, NY, OH, OK, OR, PA, RI, SC, SD, TN, TX, UT, VA, VT, WA, WV, WI, WY, AND U.S. territories

# SIDE-DISCHARGE AIR CONDITIONER SUBMITTAL

## 24,000 BTU 14 SEER SIDE-DISCHARGE AIR CONDITIONER UUC124WCDA

### COOLING CAPACITY DATA

| Outdoor<br>Air Temp<br>DB | Indoor Temperature        |                    |                           |                    |                           |                    |
|---------------------------|---------------------------|--------------------|---------------------------|--------------------|---------------------------|--------------------|
|                           | 70°F (21°C)               |                    | 75°F (24°C)               |                    | 80°F (27°C)               |                    |
|                           | Total Capacity<br>(Btu/h) | Power Usage<br>(w) | Total Capacity<br>(Btu/h) | Power Usage<br>(w) | Total Capacity<br>(Btu/h) | Power Usage<br>(w) |
| 65°F (18°C)               | 22500                     | 1460               | 24700                     | 1485               | 26950                     | 1510               |
| 75°F (24°C)               | 22000                     | 1540               | 24150                     | 1585               | 26150                     | 1625               |
| 85°F (29°C)               | 21300                     | 1680               | 23400                     | 1720               | 25150                     | 1760               |
| 95°F (35°C)               | 20400                     | 1845               | 22400                     | 1885               | 23800                     | 1925               |
| 105°F (41°C)              | 19000                     | 2010               | 20700                     | 2050               | 21900                     | 2090               |
| 115°F (46°C)              | 17500                     | 2180               | 18800                     | 2220               | 19750                     | 2260               |



# SIDE-DISCHARGE AIR CONDITIONER SUBMITTAL

## 30,000 BTU 14 SEER SIDE-DISCHARGE AIR CONDITIONER UUC130WCDA

Job Name: \_\_\_\_\_

Purchaser: \_\_\_\_\_

Submitted To: \_\_\_\_\_

Construction: \_\_\_\_\_

Reference: \_\_\_\_\_

Approval: \_\_\_\_\_

Date: \_\_\_\_\_

Submitted By: \_\_\_\_\_

Unit: \_\_\_\_\_

Drawing #: \_\_\_\_\_



### Specifications

|                            |  |
|----------------------------|--|
| Compressor                 | Rotary   |
| Uncrated Dimension (HxWxD) | 31.9 x 40.0 x 17.5 in<br>(810 x 1015 x 445 mm) |
| Crated (HxWxD)             | 38.4 x 42.3 x 19.5 in<br>(975 x 1075 x 495 mm) |
| Outdoor Sound Rating dB    | 59   |
| Heat Exchanger Fin Type    | Aluminum                                       |
| Weight (Net/Gross)         | 141.1/187.4 lbs                                |
| Factory Refrigerant Charge | R-410A (7.3 lbs)                               |

### Electrical Requirement

|                         |                             |
|-------------------------|-----------------------------|
| Power Supply            | 208-230V, 1 Phase,<br>60 HZ |
| Operating Voltage Range | 187-253 VAC                 |
| Max. Fuse/Breaker Size  | 20A                         |
| MCA                     | 14A                         |

### Operating Range

|         |                    |
|---------|--------------------|
| Cooling | 50-115°F (10-46°C) |
|---------|--------------------|

### Cooling Performance

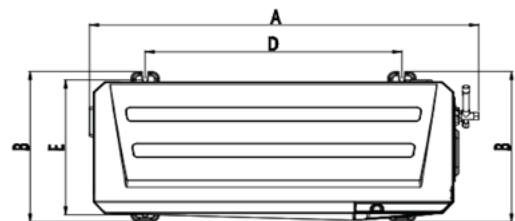
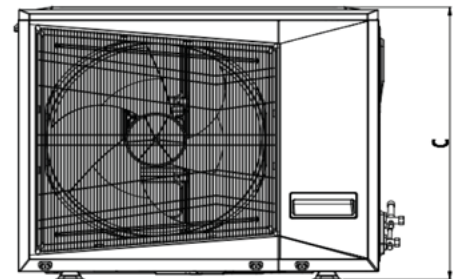
|                        |            |
|------------------------|------------|
| Rated Cooling Capacity | 28,600 BTU |
| SEER                   | 14.5       |
| EER                    | 12.0       |

### Pipe Length

|                                |                                    |
|--------------------------------|------------------------------------|
| Minimum Pipe Length            | 10 ft                              |
| Maximum Pipe Length            | 82 ft                              |
| Maximum Pipe Height Difference | 33 ft                              |
| Braze Connection               | 3/8" (Discharge)<br>3/4" (Suction) |

### Dimensions (In.)

| A    | B    | C    | D    | E    |
|------|------|------|------|------|
| 40.0 | 17.5 | 31.9 | 26.4 | 15.2 |



Notice: Federal law allows this unit to be installed only in AK, AL, AR, CO, CT, DC, DE, FL, GA, HI, ID, IL, IA, IN, KS, KY, LA, MA, ME, MD, MI, MN, MO, MS, MT, NC, ND, NE, NH, NJ, NY, OH, OK, OR, PA, RI, SC, SD, TN, TX, UT, VA, VT, WA, WV, WI, WY, AND U.S. territories

# SIDE-DISCHARGE AIR CONDITIONER SUBMITTAL

## 30,000 BTU 14 SEER SIDE-DISCHARGE AIR CONDITIONER UUC130WCDA

### COOLING CAPACITY DATA

| Outdoor<br>Air Temp<br>DB | Indoor Temperature        |                    |                           |                    |                           |                    |
|---------------------------|---------------------------|--------------------|---------------------------|--------------------|---------------------------|--------------------|
|                           | 70°F (21°C)               |                    | 75°F (24°C)               |                    | 80°F (27°C)               |                    |
|                           | Total Capacity<br>(Btu/h) | Power Usage<br>(w) | Total Capacity<br>(Btu/h) | Power Usage<br>(w) | Total Capacity<br>(Btu/h) | Power Usage<br>(w) |
| 65°F (18°C)               | 29000                     | 1870               | 31800                     | 1900               | 34400                     | 1930               |
| 75°F (24°C)               | 28200                     | 1980               | 30900                     | 2020               | 33200                     | 2060               |
| 85°F (29°C)               | 27200                     | 2140               | 29750                     | 2180               | 31700                     | 2220               |
| 95°F (35°C)               | 26150                     | 2350               | 28600                     | 2390               | 30000                     | 2430               |
| 105°F (41°C)              | 24800                     | 2620               | 27000                     | 2660               | 28100                     | 2700               |
| 115°F (46°C)              | 23200                     | 2890               | 25200                     | 2930               | 26150                     | 2970               |

# SIDE-DISCHARGE AIR CONDITIONER SUBMITTAL

## 36,000 BTU 14 SEER SIDE-DISCHARGE AIR CONDITIONER UUC136WCDA

Job Name: \_\_\_\_\_

Purchaser: \_\_\_\_\_

Submitted To: \_\_\_\_\_

Construction: \_\_\_\_\_

Reference: \_\_\_\_\_

Approval: \_\_\_\_\_

Date: \_\_\_\_\_

Submitted By: \_\_\_\_\_

Unit: \_\_\_\_\_

Drawing #: \_\_\_\_\_



### Specifications

|                            |  |
|----------------------------|--|
| Compressor                 | Rotary   |
| Uncrated Dimension (HxWxD) | 31.9 x 40.0 x 17.5 in<br>(810 x 1015 x 445 mm) |
| Crated (HxWxD)             | 38.4 x 42.3 x 19.5 in<br>(975 x 1075 x 495 mm) |
| Outdoor Sound Rating dB    | 59   |
| Heat Exchanger Fin Type    | Aluminum                                       |
| Weight (Net/Gross)         | 141.1/187.4 lbs                                |
| Factory Refrigerant Charge | R-410A (7.3 lbs)                               |

### Electrical Requirement

|                         |                             |
|-------------------------|-----------------------------|
| Power Supply            | 208-230V, 1 Phase,<br>60 HZ |
| Operating Voltage Range | 187-253 VAC                 |
| Max. Fuse/Breaker Size  | 25A                         |
| MCA                     | 16A                         |

### Operating Range

|         |                    |
|---------|--------------------|
| Cooling | 50-115°F (10-46°C) |
|---------|--------------------|

### Cooling Performance

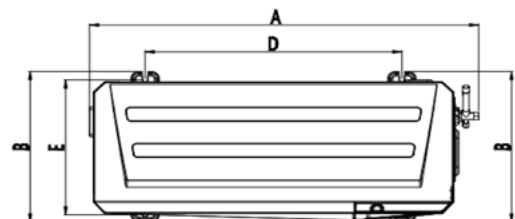
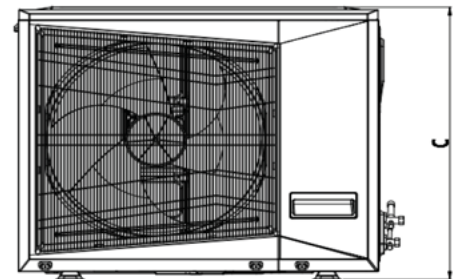
|                        |            |
|------------------------|------------|
| Rated Cooling Capacity | 34,000 BTU |
| SEER                   | 14.5       |
| EER                    | 12.0       |

### Pipe Length

|                                |                                    |
|--------------------------------|------------------------------------|
| Minimum Pipe Length            | 10 ft                              |
| Maximum Pipe Length            | 82 ft                              |
| Maximum Pipe Height Difference | 33 ft                              |
| Braze Connection               | 3/8" (Discharge)<br>3/4" (Suction) |

### Dimensions (In.)

| A    | B    | C    | D    | E    |
|------|------|------|------|------|
| 40.0 | 17.5 | 31.9 | 26.4 | 15.2 |



Notice: Federal law allows this unit to be installed only in AK, AL, AR, CO, CT, DC, DE, FL, GA, HI, ID, IL, IA, IN, KS, KY, LA, MA, ME, MD, MI, MN, MO, MS, MT, NC, ND, NE, NH, NJ, NY, OH, OK, OR, PA, RI, SC, SD, TN, TX, UT, VA, VT, WA, WV, WI, WY, AND U.S. territories

# SIDE-DISCHARGE AIR CONDITIONER SUBMITTAL

## 36,000 BTU 14 SEER SIDE-DISCHARGE AIR CONDITIONER UUC136WCDA

### COOLING CAPACITY DATA

| Outdoor<br>Air Temp<br>DB | Indoor Temperature        |                    |                           |                    |                           |                    |
|---------------------------|---------------------------|--------------------|---------------------------|--------------------|---------------------------|--------------------|
|                           | 70°F (21°C)               |                    | 75°F (24°C)               |                    | 80°F (27°C)               |                    |
|                           | Total Capacity<br>(Btu/h) | Power Usage<br>(w) | Total Capacity<br>(Btu/h) | Power Usage<br>(w) | Total Capacity<br>(Btu/h) | Power Usage<br>(w) |
| 65°F (18°C)               | 33350                     | 2160               | 36550                     | 2195               | 39800                     | 2230               |
| 75°F (24°C)               | 32600                     | 2320               | 35600                     | 2355               | 38600                     | 2390               |
| 85°F (29°C)               | 31750                     | 2540               | 34500                     | 2575               | 37000                     | 2610               |
| 95°F (35°C)               | 30850                     | 2795               | 33000                     | 2830               | 34800                     | 2865               |
| 105°F (41°C)              | 29600                     | 3090               | 31200                     | 3120               | 32500                     | 3150               |
| 115°F (46°C)              | 28100                     | 3405               | 29000                     | 3435               | 30150                     | 3465               |

# SIDE-DISCHARGE AIR CONDITIONER SUBMITTAL

## 48,000 BTU 14 SEER SIDE-DISCHARGE AIR CONDITIONER UUC148WCDA

Job Name: \_\_\_\_\_

Purchaser: \_\_\_\_\_

Submitted To: \_\_\_\_\_

Construction: \_\_\_\_\_

Reference: \_\_\_\_\_

Approval: \_\_\_\_\_

Date: \_\_\_\_\_

Submitted By: \_\_\_\_\_

Unit: \_\_\_\_\_

Drawing #: \_\_\_\_\_



### Specifications

|                            |   |
|----------------------------|---|
| Compressor                 | Scroll  |
| Uncrated Dimension (HxWxD) | 34.25 x 43.31 x 20.79 in<br>(870 x 1100 x 528 mm) |
| Crated (HxWxD)             | 40.6 x 45.0 x 21.5 in<br>(1030 x 1145 x 545 mm)   |
| Outdoor Sound Rating dB    | 64  |
| Heat Exchanger Fin Type    | Aluminum  |
| Weight (Net/Gross)         | 198.4/248 lbs                                     |
| Factory Refrigerant Charge | R-410A (8.8 lbs)                                  |

### Electrical Requirement

|                         |                             |
|-------------------------|-----------------------------|
| Power Supply            | 208-230V, 1 Phase,<br>60 HZ |
| Operating Voltage Range | 187-253 VAC                 |
| Max. Fuse/Breaker Size  | 40A                         |
| MCA                     | 26A                         |

### Operating Range

|         |                    |
|---------|--------------------|
| Cooling | 50-115°F (10-46°C) |
|---------|--------------------|

### Cooling Performance

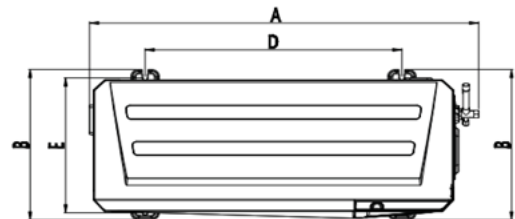
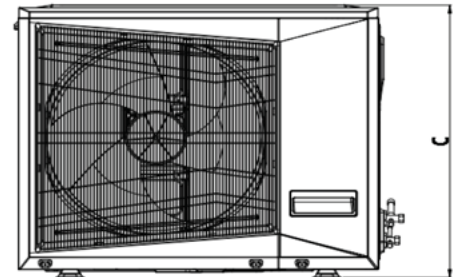
|                        |            |
|------------------------|------------|
| Rated Cooling Capacity | 46,000 BTU |
| SEER                   | 14         |
| EER                    | 11.7       |

### Pipe Length

|                                |                                    |
|--------------------------------|------------------------------------|
| Minimum Pipe Length            | 10 ft                              |
| Maximum Pipe Length            | 98 ft                              |
| Maximum Pipe Height Difference | 49 ft                              |
| Braze Connection               | 3/8" (Discharge)<br>3/4" (Suction) |

### Dimensions (In.)

| A    | B    | C    | D    | E    |
|------|------|------|------|------|
| 43.3 | 20.8 | 34.3 | 25.0 | 17.4 |



Notice: Federal law allows this unit to be installed only in AK, AL, AR, CO, CT, DC, DE, FL, GA, HI, ID, IL, IA, IN, KS, KY, LA, MA, ME, MD, MI, MN, MO, MS, MT, NC, ND, NE, NH, NJ, NY, OH, OK, OR, PA, RI, SC, SD, TN, TX, UT, VA, VT, WA, WV, WI, WY, AND U.S. territories

# SIDE-DISCHARGE AIR CONDITIONER SUBMITTAL

## 48,000 BTU 14 SEER SIDE-DISCHARGE AIR CONDITIONER UUC148WCDA

### COOLING CAPACITY DATA

| Outdoor<br>Air Temp<br>DB | Indoor Temperature        |                    |                           |                    |                           |                    |
|---------------------------|---------------------------|--------------------|---------------------------|--------------------|---------------------------|--------------------|
|                           | 70°F (21°C)               |                    | 75°F (24°C)               |                    | 80°F (27°C)               |                    |
|                           | Total Capacity<br>(Btu/h) | Power Usage<br>(w) | Total Capacity<br>(Btu/h) | Power Usage<br>(w) | Total Capacity<br>(Btu/h) | Power Usage<br>(w) |
| 65°F (18°C)               | 46000                     | 3170               | 50950                     | 3195               | 55900                     | 3230               |
| 75°F (24°C)               | 45200                     | 3455               | 49600                     | 3490               | 54100                     | 3525               |
| 85°F (29°C)               | 44200                     | 3800               | 48000                     | 3835               | 52050                     | 3870               |
| 95°F (35°C)               | 43000                     | 4190               | 46100                     | 4225               | 49650                     | 4260               |
| 105°F (41°C)              | 41500                     | 4630               | 44000                     | 4665               | 47000                     | 4700               |
| 115°F (46°C)              | 39700                     | 5115               | 41500                     | 5150               | 44100                     | 5185               |