

Job Name: \_\_\_\_\_

Purchaser: \_\_\_\_\_

Submitted To: \_\_\_\_\_

Construction: \_\_\_\_\_

Reference: \_\_\_\_\_

Approval: \_\_\_\_\_

Date: \_\_\_\_\_

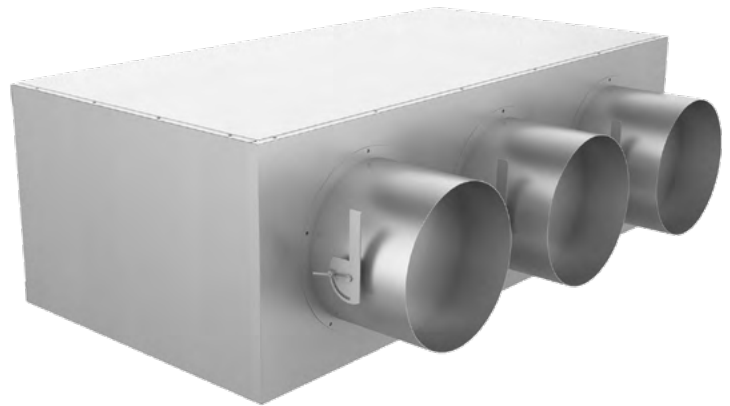
Submitted By: \_\_\_\_\_

Unit: \_\_\_\_\_

Drawing #: \_\_\_\_\_

The supply plenum is designed to fit on the discharge outlet flange on the front of the air handler, and has **three 8"** start collars with integrated air balancing dampers

Model	Compatible Indoor Unit Model
UAPT0912A	USYM09U
	USYM12U



### Specifications

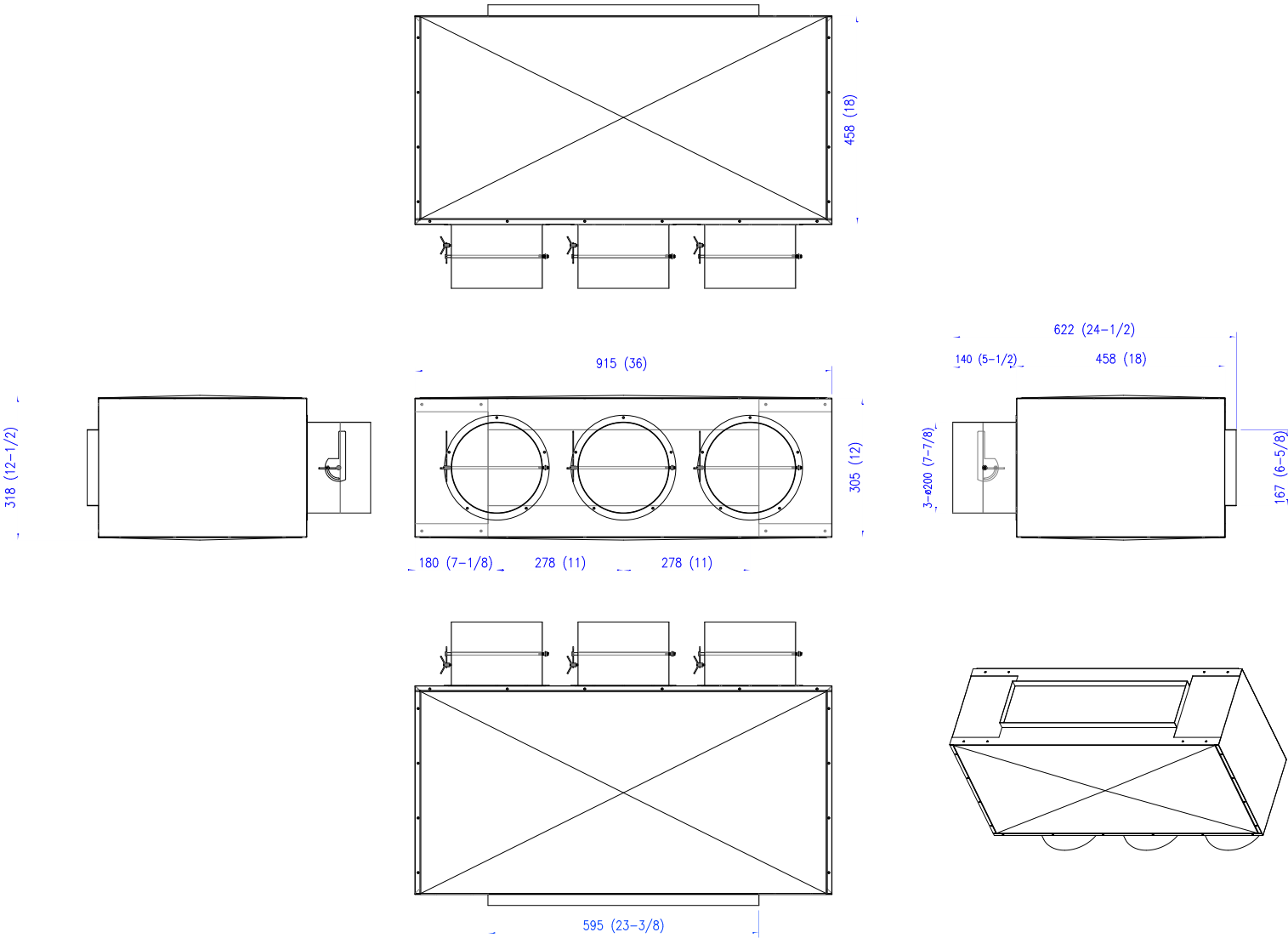
Model	Gauge	Finish	Outlets	Dimensions			Heater Size
				Height	Width	Depth	
UAPT0912A	24	Unfinished	3" x 8" Round	12"	36"	18"	12" x 36"

See following page for plenum dimension diagram

### Supply Air Plenum Pressure Drop

ESP Setting	Pressure Drop ("wg)		
	Low	Medium	High
0.1	0.01	0.02	0.02
0.15	0.01	0.02	0.03
0.2	0.02	0.02	0.03
0.28	0.02	0.03	0.04
0.36	0.03	0.04	0.04
0.4	0.03	0.04	0.04
0.44	0.04	0.04	0.04
0.48	0.04	0.04	0.05
0.52	0.04	0.05	0.05
0.6	0.04	0.05	0.05

Note: All measurements are shown in MM (IN). MM are rounded to the nearest MM, while IN are rounded to the nearest 1/8.



Job Name: \_\_\_\_\_

Approval: \_\_\_\_\_

Purchaser: \_\_\_\_\_

Date: \_\_\_\_\_

Submitted To: \_\_\_\_\_

Submitted By: \_\_\_\_\_

Construction: \_\_\_\_\_

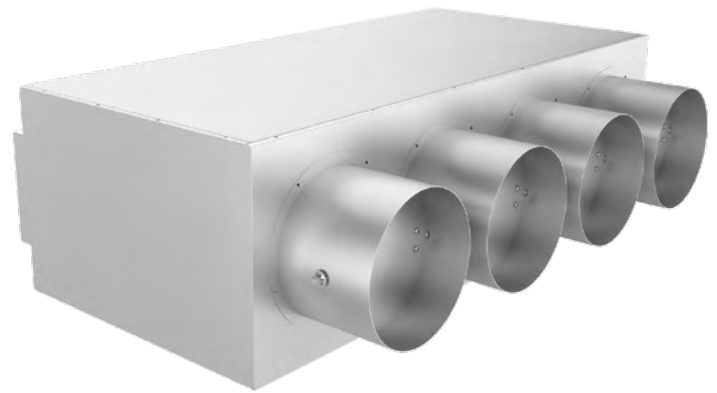
Unit: \_\_\_\_\_

Reference: \_\_\_\_\_

Drawing #: \_\_\_\_\_

The supply plenum is designed to fit on the discharge outlet flange on the front of the air handler, and has **four 8"** start collars with integrated air balancing dampers

Model	Compatible Indoor Unit Model
UAPT1824A	USYM18U
	USYM24U



### Specifications

Model	Gauge	Finish	Outlets	Dimensions			Heater Size
				Height	Width	Depth	
UAPT1824A	24	Unfinished	4" x 8" Round	12"	36-3/8"	18"	12" x 39"

See following page for plenum dimension diagram

### Supply Air Plenum Pressure Drop

ESP Setting	Pressure Drop ("wg)		
	Low	Medium	High
0.1	0.01	0.02	0.02
0.15	0.01	0.02	0.03
0.2	0.02	0.02	0.03
0.28	0.02	0.03	0.04
0.36	0.03	0.04	0.04
0.4	0.03	0.04	0.04
0.44	0.04	0.04	0.04
0.48	0.04	0.04	0.05
0.52	0.04	0.05	0.05
0.6	0.04	0.05	0.05

Note: All measurements are shown in MM (IN). MM are rounded to the nearest MM, while IN are rounded to the nearest 1/8.

