

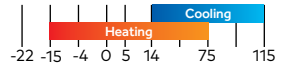
ADVANCED PLUS SERIES



Haier

Model Name	System	09AP	12AP	15AP	18AP	24AP
	Outdoor	1U09AP2VHA	1U12AP2VHA	1U15AP2VHA	1U18AP2VHA	1U24AP2VHA
	Indoor	AW09ES2VHB	AW12ES2VHB	AW15ES2VHB	AW18ES2VHB	AW24ES2VHB
Cooling	Rated Capacity Btu/hr	9,000	12,000	15,000	17,000	22,000
	Capacity Range Btu/hr	3,200-12,500	3,300-15,000	5,400-24,000	5,400-26,500	6,400-30,000
	Rated Power Input W	640	960	1,200	1,390	1,760
	SEER	23.5	23.0	21.5	21.0	20.0
	EER	14.5	12.5	12.5	12.5	12.5
	Moisture Removal Pt./h	3.50	3.90	4.10	4.30	7.00
Heating	Rated Heating Capacity 47°F Btu/hr	10,000	13,000	16,000	22,000	27,600
	Heating Capacity Range Btu/hr	3,800-15,600	3,900-20,000	4,000-26,000	4,000-30,000	6,200-36,000
	Rated Power Input W	680	1,500	1,700	2,100	2,630
	HSPF	10.5	11.0	10.5	10.5	10.0
	Max. Heating Capacity 17°F Btu/hr	13,000	15,000	17,000	19,000	26,000
	Max. Heating Capacity 5°F Btu/hr	10,000	13,000	16,000	17,000	20,000
Max Heating Capacity -15°F Btu/hr	6,500	7,500	10,000	12,000	14,000	
Operating Range	Cooling °F(°C)	14-115(-10-46)	14-115(-10-46)	14-115(-10-46)	14-115(-10-46)	14-115(-10-46)
	Heating °F(°C)	-15-75(-26-24)	-15-75(-26-24)	-15-75(-26-24)	-15-75(-26-24)	-15-75(-26-24)
Power Supply	Voltage, Cycle, Phase V/Hz/-	208-230/60/1	208-230/60/1	208-230/60/1	208-230/60/1	208-230/60/1
Outdoor Unit	Compressor Type	DC inverter Driven Rotary				
	Maximum Fuse Size A	15	15	20	20	30
	Minimum Circuit Amp A	11.0	11.0	14.0	14.0	20.0
	Outdoor Noise Level dB	54	54	55	55	57
	Dimension: Height in (mm)	23 1/2 (597)	23 1/2 (597)	27 7/16 (697)	27 7/16 (697)	30 (762)
	Dimension: Width in (mm)	30 11/16 (780)	30 11/16 (780)	35 (890)	35 (890)	36 3/16 (920)
	Dimension: Depth in (mm)	11 7/16 (290)	11 7/16 (290)	13 7/8 (353)	13 7/8 (353)	15 1/8 (385)
ODU Weight (Ship/Net)- lbs	85/78.5	85/78.5	110.5/100.5	110.5/100.5	141/130	
Indoor Unit	Fan Speed Stages	5 + Auto	5 + Auto	5 + Auto	5 + Auto	5 + Auto
	Sound Level dB (Turbo/High/Med/Low/Quiet)	44/40/35/31/23	45/41/36/32/23	48/46/42/36/34	48/46/42/36/34	49/47/42/36/34
	Dimension: Height in (mm)	12 1/4 (310)	12 1/4 (310)	13 1/4 (336)	13 1/4 (336)	13 1/4 (336)
	Dimension: Width in (mm)	35 7/16 (900)	35 7/16 (900)	43 7/8 (1115)	43 7/8 (1115)	43 7/8 (1115)
	Dimension: Depth in (mm)	8 7/16 (215)	8 7/16 (215)	9 9/16 (243)	9 9/16 (243)	9 9/16 (243)
	IDU Weight (Ship/Net)- lbs	31/25.5	31/25.5	43.5/35.5	43.5/35.5	45.5/38
Refrigerate Line	Connections	Flare	Flare	Flare	Flare	Flare
	Liquid O.D. in	1/4	1/4	1/4	1/4	1/4
	Suction O.D. in	3/8	3/8	1/2	1/2	1/2
	Factory Charge Oz	38.8	38.8	52.2	52.2	74.1
	Max Line Length Ft / m	50/15	50/15	83/25	83/25	83/25
	Max Height Ft / m	33/10	33/10	50/15	50/15	50/15

Operating Range (°F):



FEATURES & BENEFITS

OPTIONAL WIFI CONTROL

Remotely control ductless system from any smart phone or tablet

A-PAM DC INVERTER

Leading compressor technology for maximum comfort and efficiency

-15°F HEATING

Low ambient heating down to -15F (-26C)

BASE PAN HEATER

Prevents condensate water from freezing and blocking the base pan drain openings

3D AIR FLOW

Delivers air vertically and horizontally for even distribution throughout the room

BLUE FIN

A special coating that whisks away condensate water

LONG DISTANCE AIR SUPPLY

Optimized fan motor and blower design enables up to 60 feet of air flow

AUTO LOUVER

Automatically adjusts airflow upward when cooling, or downward when heating

WARM START

Ensures the fan will not blow cold air during heating mode startup

TURBO MODE

Cools or heats the room quickly

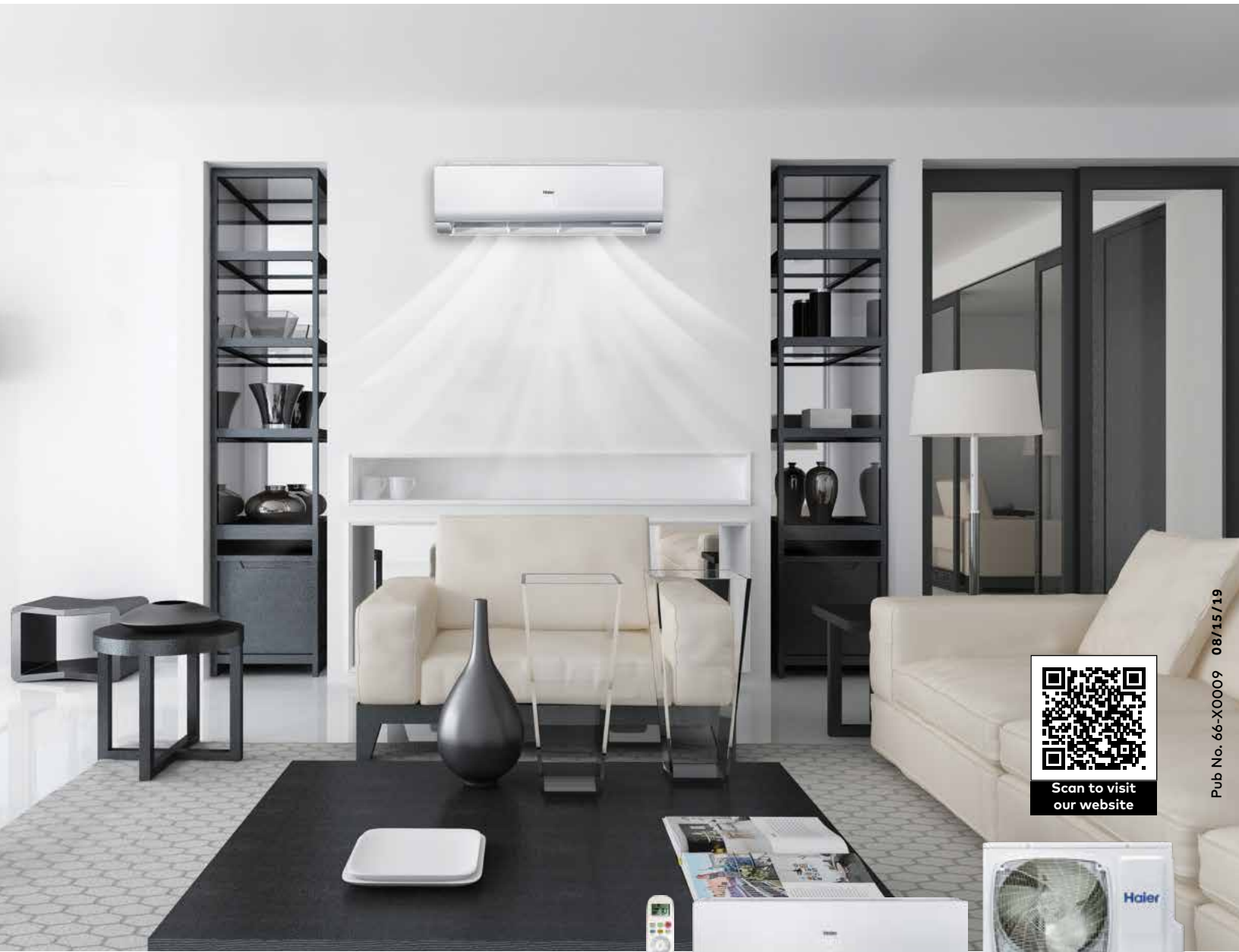
QUIET MODE

Minimizes indoor noise while maintaining comfort levels

For more info

Visit: www.Haierductless.com
www.Haierductlesshelp.com





Pub No. 66-X0009 08/15/19



Scan to visit
our website



Optional Accessories	Description
QAWF01A	WiFi Adapter (Sold Separately)
QAWB42A	Wind Baffle for 1U09AP2VHA and 1U12AP2VHA
QAWB37A	Wind Baffle for 1U15AP2VHA and 1U18AP2VHA
QAWB45A	Wind Baffle for 1U24AP2VHA
QAWF01A	WiFi Module for Highwall Indoor (AW09ES2VHB, AW12ES2VHB, AW15ES2VHB, AW18ESVHB and AW24ES2VHB)
YR-HG	Remote Controller for Indoor (Ships with highwall indoor unit)
YR-E16B	Color Screen Programmable Wired Controller
WK-B	Wired Controller Kit for Wall Mount Type indoor (WK-B is required for Advanced wall mount (AW09ES2VHB, AW12ES2VHB, AW18ESVHB and AW24ES2VHB) with all wired controller application)
QACT17A	Easy Wired Controller

Our continuing commitment to quality products may mean a change in specifications without notice.